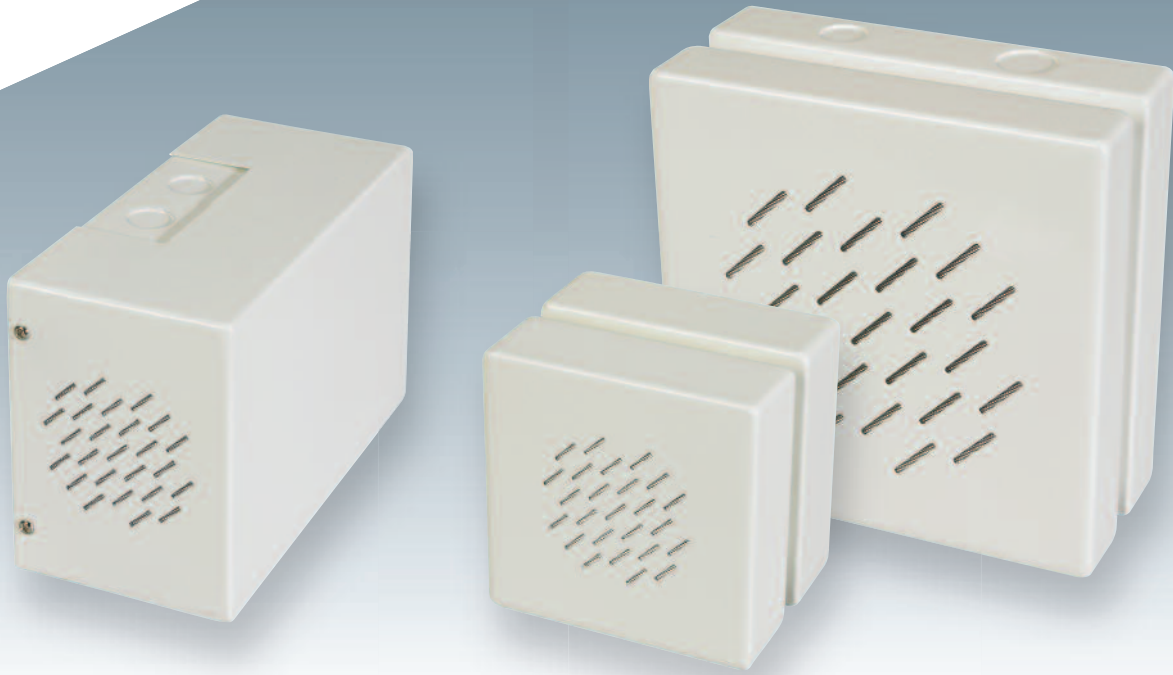


Fire



SAFE-V4 / SAFE-V6 / SAFE BI-DI

10W Vandal resistant
Loudspeakers

COOPER Safety

This series of elegant looking robust metal cabinet loudspeakers are vandal resistant and are supplied with a 100 volt line transformer. The units contain 2 x 20mm knock-out gland entries and have a range of fixing holes for easy installation to wall or ceiling. Recommended for voice evacuation systems, these units are ideally suited for use in shopping centres, prisons, schools, railway stations, etc., and can be supplied in optional colours on request. **SAFE-V4, SAFE-V6 units are supplied with 100V/70V line transformer as standard.**

The Safe Bi-Di is a bi-directional 10W loudspeaker ideal for corridors.

The Safe range is supplied as standard in compliance with BS5839 Part 8.

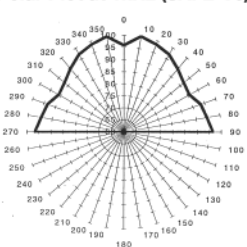
Features

- > Up to 100dB(A) at 10W at 1 metre
- > BS5839, Part 8 Compliant as standard
- > Up to 10 watts
- > Vandal-proof
- > 100V/70V line transformer (SAFE-V4 / SAFE-V6)

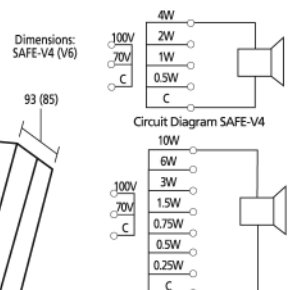
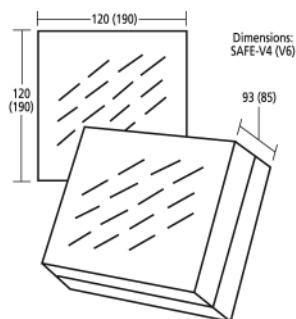
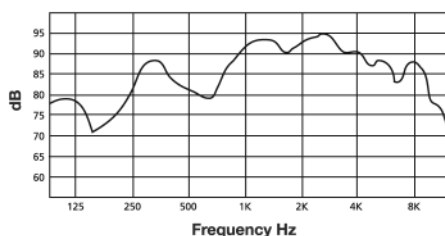
Technical Specifications

Model	SAFE-V4	SAFE-V6	SAFE BI-DI
Dimensions front and depth	120 x 120 x 93mm	190 x 190 x 85mm	210 x 135 x 100mm
Rated power	4W	10W	10W
Maximum power, RMS	6W	10W	10W
Material/Colour/finish	White RAL 9010/Mild steel	White RAL 9010/Mild steel	White RAL 9010/Mild steel, epoxy coated
Sound pressure level, power W/1m 1 W at 1 metre	93dB 87dB	100dB 90dB	95 (x2)dB 85 (x2)dB
Nett weight alone/with transformer	1.1/1.3Kg	1.8/2.0Kg	2.0Kg
Max/min ambient temperature	- 20°C to + 50°C	- 20°C to + 50°C	- 20°C to + 50°C
Effective frequency range	120-12,000Hz	110-12,000Hz	120-12,000Hz
Dispersion at 1,000Hz	134° conical	150° conical	180° conical
Terminal	Ceramic block	Ceramic block	Ceramic block
Mounting	6mm fixing holes	6mm fixing holes	6mm fixing holes
Transformer power tappings	0.5, 1.0, 2.0, 4.0W	0.25, 0.5, 0.75, 1.5, 3.0, 6.0, 10W	0.25, 0.5, 0.75, 1.5, 3.0, 6.0, 10W
Input impedance standard model	20k, 10k, 5k, 2.5k ohms	40k, 20k, 13.33k, 6.66k, 3.33k, 1.66k, 1.0k ohms	40k, 20k, 13.33k, 6.66k, 3.33k, 1.66k, 1.0k ohms
Impedance	8 ohms	8 ohms	4 ohms

Polar Plot at 1kHz (SAFE-V6)

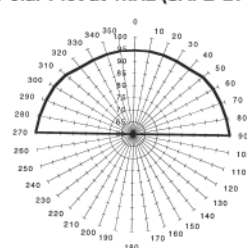


**SAFE-V6
Frequency Response at 1W/1M**

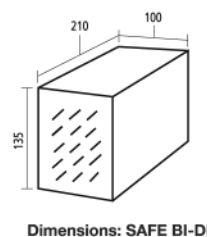
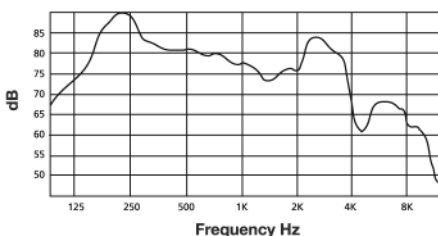


Circuit Diagram SAFE-V6

Polar Plot at 1kHz (SAFE-BI-DI)



**SAFE-BI-DI
Frequency Response at 1W/1M**



Dimensions: SAFE BI-DI

Product Codes

SAFE-V4TPT8	Metal cabinet loudspeaker, 6W, 100V transformer, Part 8 Compliant
SAFE-V6TPT8	Metal cabinet loudspeaker, 10W, 100V transformer, Part 8 Compliant
SAFE-V6TVC	Metal cabinet loudspeaker, 10W, 100V transformer, Part 8 Compliant, with volume control
SAFE-BI-DI 6TPT8	Metal cabinet loudspeaker, 10W, 100V transformer, Part 8 Compliant, bi-directional



Cooper Safety

Wheatley Hall Road, Doncaster, South Yorkshire DN2 4NB

www.cooperfire.com

Sales

T: +44 (0)1302 303 999
F: +44 (0)1302 303 333
E: sales@cooperfire.com

Technical

T: +44 (0)1302 303 350
F: +44 (0)1302 303 332
E: techsupport@cooperfire.com

Export

T: +44 (0)1302 303 344
F: +44 (0)1302 303 345
E: export@cooperfire.com

COOPER Safety